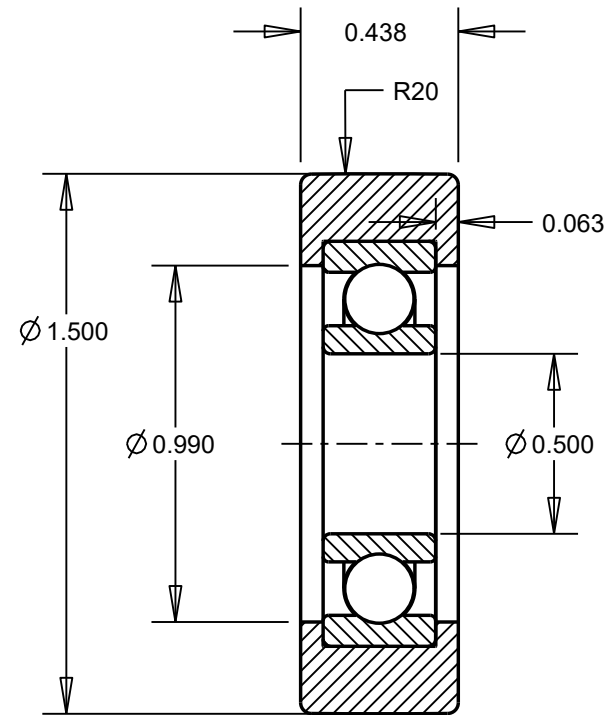
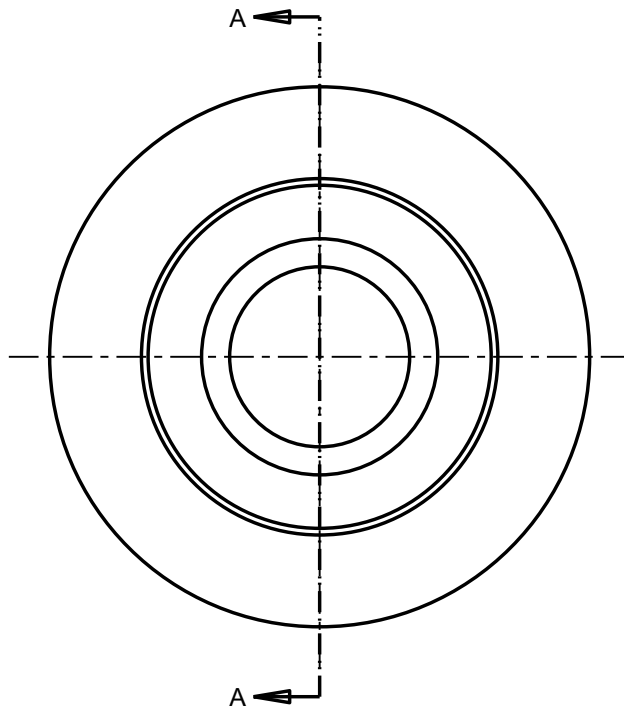


SCALE 1.250



SECTION A-A

Customer Copy

| -   | -           | -               | -  |
|---|-------------|-----------------|----|
| REV   | DESCRIPTION | DATE            | BY |
| <p>CONFIDENTIALITY NOTICE THIS DRAWING, INFORMATION, AND DESIGN CONTAINED HEREIN ARE THE EXCLUSIVE AND PROPRIETARY PROPERTY OF INTECH POWERCORE CORPORATION, INC. AND SHALL BE RETURNED UPON DEMAND AND SHALL NOT BE REPRODUCED IN WHOLE OR IN PART, DISCLOSED TO ANYONE ELSE, OR USED, WITHOUT THE WRITTEN CONSENT OF INTECH POWERCORE CORPORATION, INC.</p> |             |                 |    |
| Drawn by: J.S.  |             | Date: Nov-12-20 |    |

UNLESS OTHERWISE SPECIF.  
BREAK EDGES .005 X 45°  
DEBURR AND CLEAN PLASTIC  
TEETH AFTER MACHINING



ENGLISH  
FRAC 1/64  
DEC .XX .008  
DEC .XXX .004  
DEGREES 1/2

**INTECH**

www.intechpower.com

Intech PowerCore Corporation  
250 Herbert Ave, Closter, NJ 07624  
Tel: (201) 767-8066  
Fax: (201) 767-7797

**FT1-1.500**

|                    |              |      |
|--------------------|--------------|------|
| CAD Model No:      | Drawing No:  | Rev. |
| FT1-1500           | FT1-1500_CC  | -    |
| Model SCALE: 1.875 | SHEET 1 OF 1 |      |