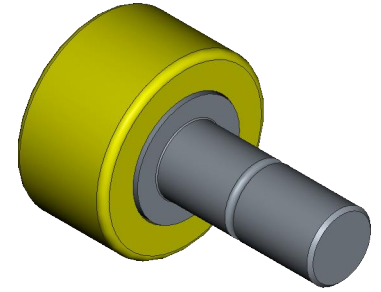
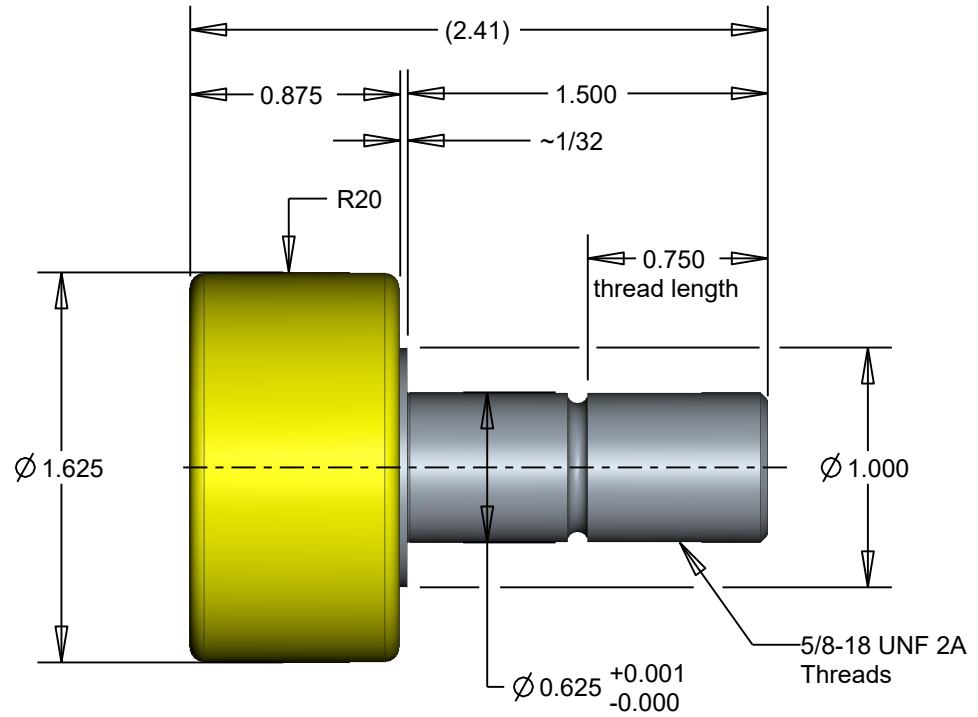
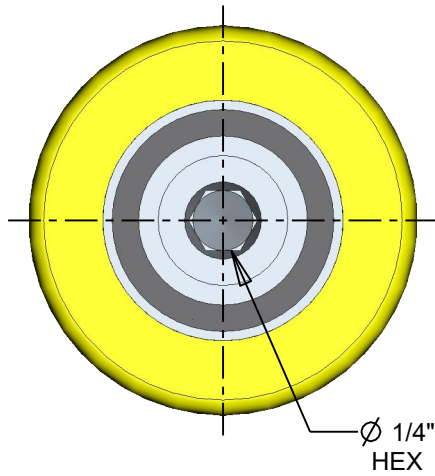


Load Capacity: 330 Lbf



SCALE 0.750



Customer Copy

REV	DESCRIPTION	DATE	BY
-	-	-	-
<p>CONFIDENTIALITY NOTICE THIS DRAWING, INFORMATION, AND DESIGN CONTAINED HEREIN ARE THE EXCLUSIVE AND PROPRIETARY PROPERTY OF INTECH POWERCORE CORPORATION, INC. AND SHALL BE RETURNED UPON DEMAND AND SHALL NOT BE REPRODUCED IN WHOLE OR IN PART, DISCLOSED TO ANYONE ELSE, OR USED, WITHOUT THE WRITTEN CONSENT OF INTECH POWERCORE CORPORATION, INC.</p>			
<p>Drawn by: J.S.</p>		<p>Date: Nov-13-20</p>	

UNLESS OTHERWISE SPECIF.
BREAK EDGES .005 X 45°
DEBURR AND CLEAN PLASTIC
TEETH AFTER MACHINING

ENGLISH
FRAC 1/64
DEC .XX .008
DEC .XXX .004
DEGREES 1/2

"A" Size
THIRD ANGLE
PROJECTION

INTECH

www.intechpower.com

Intech PowerCore Corporation
250 Herbert Ave, Closter, NJ 07624
Tel: (201) 767-8066
Fax: (201) 767-7797

iPC-1.625		
CAD Model No:	Drawing No:	Rev.
IPC-1625_CC	IPC-1625_CC	-
Model SCALE: 1.250	SHEET 1 OF 1	